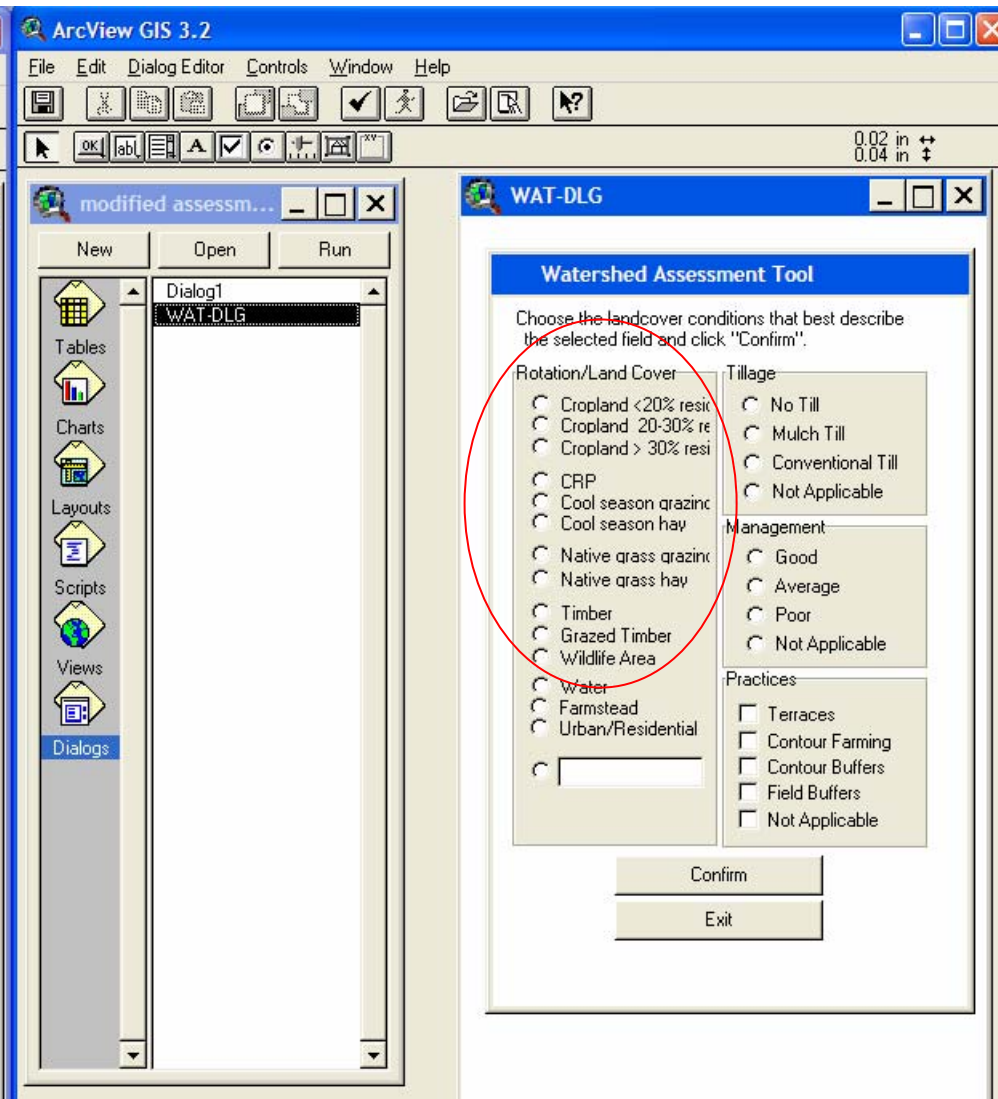
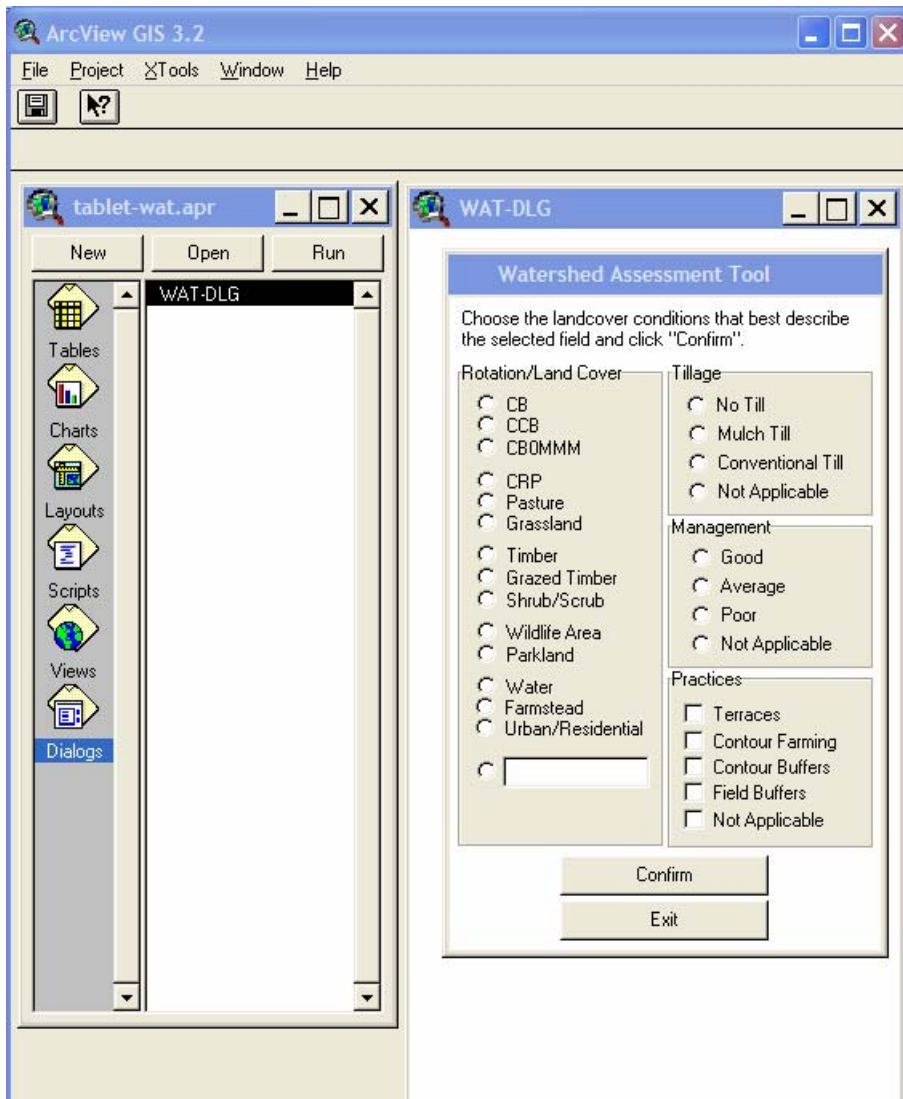


ArcView 3.x Dialog Editor

Iowa DNR Watershed Assessment Tool (WAT) Dialog

Modified Land Cover Data Collection Dialog



ArcView 3.x Avenue Script Editor – WAT Point Tool

The screenshot displays the ArcView 3.2 Avenue Script Editor interface. The main window shows a script for the WAT.PointTool. The script includes the following code:

```
theView = av.GetActiveDoc  
  
pt = theView.GetDisplay.ReturnUserPoint  
PtList = {"Open Feedlot", "CAFO", "Grade Stab Structure", "Sediment Basin", "Highly Eroded Area", "Round bale feeding site"}  
  
Themes = theView.GetThemes  
  
For Each t in Themes  
  If (t.GetName = "WAT-Point") Then  
    theView.SetEditableTheme(t)  
  End  
End  
  
theTheme = theView.GetEditableTheme  
PtFTab = theTheme.GetFTab  
  
thePrj = theView.GetProjection  
if (thePrj.IsNull.Not) then  
  pt = pt.ReturnUnprojected(thePrj)  
end  
theField = theTheme.GetFTab.FindField("Shape")  
ComField = theTheme.GetFTab.FindField("Comment")  
  
If (ComField = nil) Then  
  ComField = Field.Make("Comment", #FIELD_CHAR, 30, 0)  
  'PtFTab.SetEditable(True)  
  PtFTab.AddFields({ComField})  
  'PtFTab.SetEditable(False)  
  ComField = theTheme.GetFTab.FindField("Comment")  
End  
  
theTheme.GetFTab.BeginTransaction  
rec = theTheme.GetFTab.AddRecord  
theTheme.GetFTab.SetValue(theField, rec, pt)  
  
Comment = MsgBox.ListAsString(PtList, "Please select the appropriate choice", "Point Type")  
If (Comment = "CAFO") Then  
  Comment2 = MsgBox.ListAsString({"Hogs", "Beef", "Dairy", "Chickens", "Turkeys", "Sheep"}, "Please select the animal type", "Animal Type")  
  Comment = Comment + ", " + Comment2  
End  
If (Comment = "Highly Eroded Area") Then  
  Comment2 = MsgBox.Input("Please enter the size of the area (in acres)", "Acreage of Highly Eroded", "0.0")  
  Comment = Comment + ", " + Comment2  
End  
If (Comment <> nil) Then  
  theTheme.GetFTab.SetValueString(ComField, rec, Comment)  
End  
theTheme.GetFTab.EndTransaction  
theTheme.GetFTab.GetSelection.ClearAll  
theTheme.GetFTab.GetSelection.Set(rec)  
theTheme.GetFTab.UpdateSelection  
theTheme.StopEditing(True)  
  
av.GetProject.SetModified(true)  
theView.Invalidate
```

Two dialog boxes are overlaid on the script editor:

- Point Type**: A dialog box titled "Point Type" with the text "Please select the appropriate choice". It contains a list box with the following items: Open Feedlot, CAFO, Grade Stab Structure, Sediment Basin, Highly Eroded Area, and Round bale feeding site. The "Round bale feeding site" item is selected and circled in red. There are "OK" and "Cancel" buttons.
- Line Type**: A dialog box titled "Line Type" with the text "Please select the appropriate choice". It contains a list box with the following items: Moderate Gully, Severe Gully, Moderate Streambank Ero, Severe Streambank Ero, Grassed Waterway, and Filterstrip. The "Moderate Gully" item is selected. There are "OK" and "Cancel" buttons.

ArcPad Quickform – WAT Land Cover Shape File

QuickForm

Layout | Fields | Controls | **Enter data options with comma separators**

Additional properties for form controls

Required	Label	Minimum	Maximum	List Values	Tooltip
<input type="checkbox"/>	123 CALCACR...				
<input checked="" type="checkbox"/>	abc COVER			Cropland, CRP, Cool Season, Native, Timber, Wildlife, Water, ...	
<input type="checkbox"/>	abc TILLAGE			No till, Mulch Till, Conventional Till, N/A	
<input type="checkbox"/>	abc MGMT			Good, Average, Poor, N/A	
<input type="checkbox"/>	abc PRACTICE			Tenaces, Contour Farming, Contour Buffers, Field Buffers, N/A	
<input checked="" type="checkbox"/>	123 ASSESSM...	0	1	0, 1	

762145.6 4508146.3 m 1:39:46

ArcPad

A 'QuickForm' has been created and is now ready to use. Use ArcPad Application Builder to further customize the form.

OK

