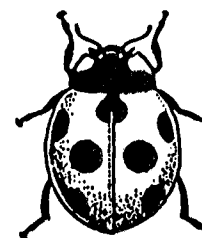
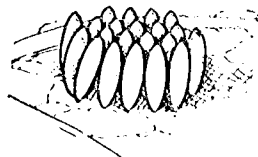


Beneficial Insects in Wheat

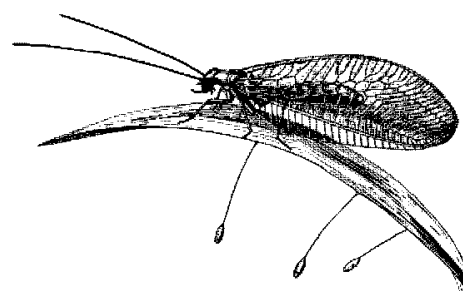
Phillip E. Sloderbeck

Extension Specialist
Entomology, Southwest

Lady Beetles - Eggs bright yellow and laid in clusters. Larvae black with orange patches, chewing mouth parts, elongated, six-legged bodies. Adults small oval beetles orange or red in color with various numbers of spots depending on the species.



Lacewings or Aphid lions - Eggs white with thread-like stalk. Larvae gray with reddish-brown or yellow patches and sickle-shaped mandibles. Adults green or brown depending on the species with two pair of very membranous wings.



Parasitic Wasps - Tiny wasps that lay their eggs inside the bodies of aphids. The eggs hatch and the larvae feed on the body contents of the aphids. Excretions of the larvae cause the aphids to die leaving a mummified shell of the aphid attached to the leaves. Adults eventually emerge from the mummified aphids by chewing a circular hole in the top side of the abdomen.

