

**Friend of KSU Gardens Membership/  
Volunteer Information Form:**

Name \_\_\_\_\_

Address \_\_\_\_\_

City \_\_\_\_\_

State \_\_\_\_\_ Zip \_\_\_\_\_

Phone \_\_\_\_\_

E-mail \_\_\_\_\_

**Membership:**

**I would like to support the KSU Gardens at the following level:**

- Patron (\$1 to \$49)
- Contributor (\$50 to \$99)
- Supporter (\$100 to \$249)
- Benefactor (\$250 to \$499)
- Builder's Circle (\$500 to \$999)
- Distinguished Friend (\$1000 and up)

Those reaching a lifetime giving of \$10,000 will be inducted into the Quinlan Society

**Volunteer:**

**Please specify area of interest:**

\_\_\_\_\_

Please return form to:

Friends of KSU Gardens  
Department of Horticulture,  
Forestry and Recreation Resources  
2021 Throckmorton Plant Sciences Center  
Manhattan, KS 66506-5506

“Friends of KSU Gardens” D25860

**Hours of Operation:**

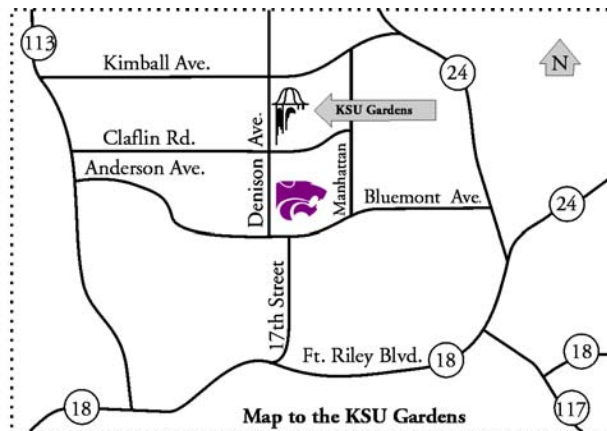
The public is welcome to visit the Kansas State University Gardens. Hours of operation are March through November:  
Daily, dawn to midnight.

The **Conservatory** and **Quinlan Visitor Center** are open to the public. Hours of operation are March through November:

Monday thru Friday,  
10 a.m. to 4 p.m.

Saturdays and Sundays,  
During Special Events Only.

*Admission is Free.*



Kansas State University  
**GARDENS**

Contact us at 785-532-3271

[www.ksu.edu/gardens](http://www.ksu.edu/gardens)

2021 Throckmorton., Manhattan, KS 66506

This brochure is funded in part by  
**The City/University Projects Fund**



Kansas State University  
**GARDENS**

## Individual Garden Areas and Special Collections



*Adaptive/Native Plant Garden and Historic Conservatory*

The **Conservatory**, originally called the Plant Museum, was built in 1907. It is representative of the Victorian architectural style typical in greenhouse construction in the late 1890s. With controlled heat and humidity, it provides a year-round growing space for plant material that can't survive in the ever-changing Kansas climate.

Located on the southwest side of the Conservatory, the **Adaptive/Native Plant Garden** emphasizes plant material found growing in natural areas throughout Kansas and the Great Plains.



*Butterfly Garden and "Serenity" Sculpture*

The **Butterfly Garden** on the southeast side of the historic Conservatory is home to hundreds of native butterflies, which gather during the hot, calm days of summer. Assorted plants in the garden provide the needed food for larval and adult butterflies.

Seated on a bench within the Butterfly Garden is **Serenity** a sculpture of a student with his hand carefully stretched out holding a delicate butterfly.



*Quinlan Visitor's Center and Cottage Garden*

The **Cottage Garden** recalls the use of space and plants surrounding country homes. It provided herbs, vegetables, fruit and flowers for daily use. A large variety of plants were grown on nearly every inch of soil with space left between gardens for a path leading to the front door.

In addition to these Specialty Gardens, the KSU Gardens is home to large collections of **Daylilies**, **Iris** and **Roses** that are both fragrant and rich in color. These plant collections are a treat for the senses!

## *Providing Excellence in Garden Education*

The KSU Gardens is a privately funded project developed and operated by the Department of Horticulture, Forestry and Recreation Resources in the College of Agriculture at Kansas State University. Donations from individuals, families, and organizations support the KSU Gardens. The pace of development depends on funding for the construction and maintenance endowment.

A variety of support opportunities exist for both groups and individuals. You are invited to explore sponsorship options with either the Director of Development for the College of Agriculture, the Director of the KSU Gardens, or the Head of the KSU Department of Horticulture, Forestry and Recreation Resources. All donations and sponsorships are tax deductible and are acknowledged in writing.

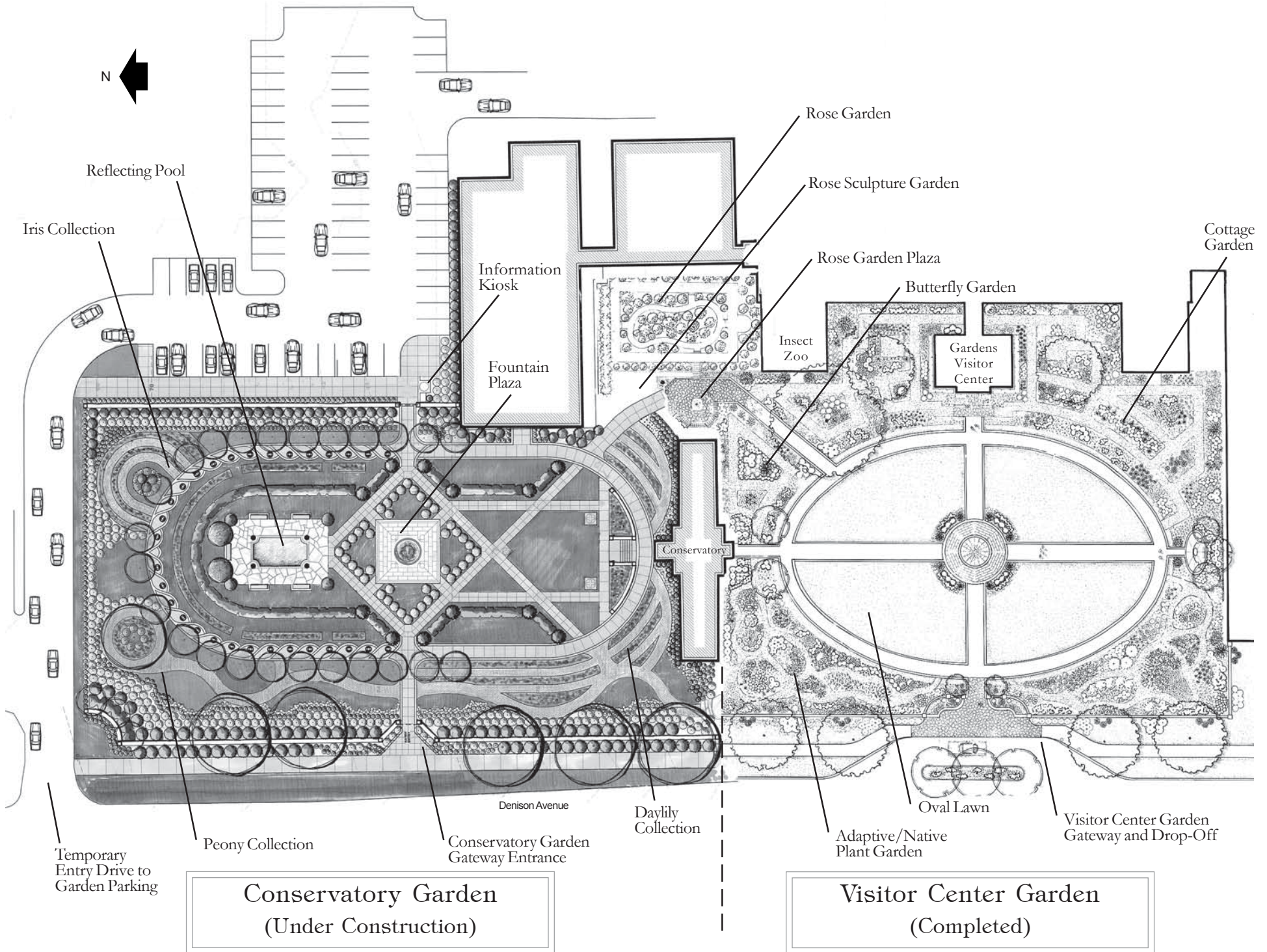
### **Group Tours**

The KSU Gardens is pleased to provide tours of the gardens and facility. Call the Gardens Information line at 785-532-3271 to schedule a tour.

### **Parking Information**

There is a parking lot off of Denison Ave. just northeast of the Conservatory. Spaces are limited 8 a.m. to 5 p.m., Monday through Friday. Bus parking is available; short-term only. All vehicles must be registered at the KSU Gardens Visitor's Center.

# Kansas State University Gardens: Site Map of the Visitor Center and Conservatory Gardens



# Kansas State University Gardens (Future Development)

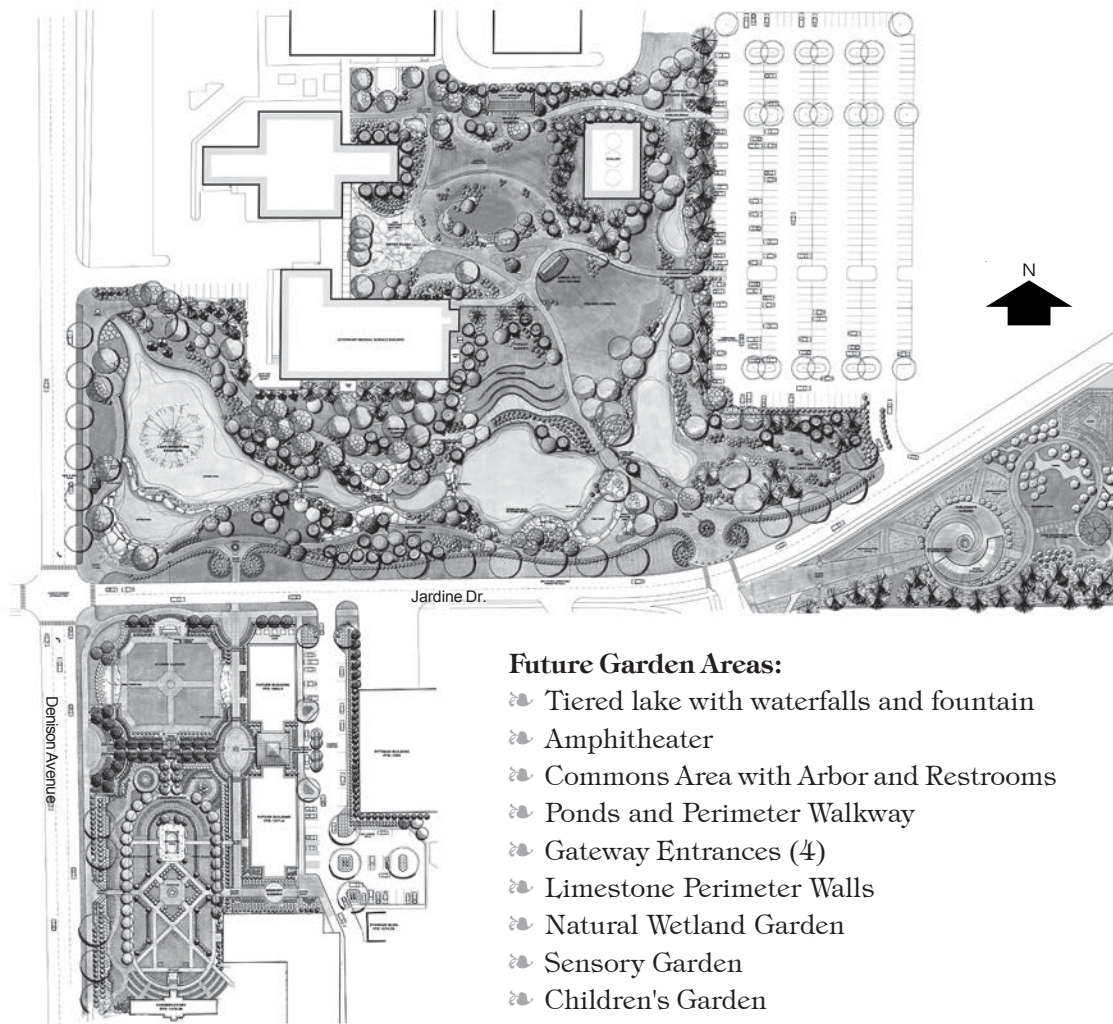


## *Grow with the Gardens:* Become a Friend and/or be a Volunteer of the KSU Gardens

Volunteers provide essential assistance in many areas of the KSU Gardens. We greatly appreciate all their hard work. If you are interested in volunteering in any of the following capacities, please return the enclosed form indicating your special interests.

### **Volunteer Opportunities include:**

Gardening	Tour Guide
Information Center	Education Programs
Gift Shop	Speaker's Bureau
Special Events	Publication Production
Butterfly Exhibit	Other (please indicate)



### **Future Garden Areas:**

- Tiered lake with waterfalls and fountain
- Amphitheater
- Commons Area with Arbor and Restrooms
- Ponds and Perimeter Walkway
- Gateway Entrances (4)
- Limestone Perimeter Walls
- Natural Wetland Garden
- Sensory Garden
- Children's Garden
- Woodland Garden
- Prairie Garden
- Alumni Garden
- Poisonous Plant Garden

The Master Plan for the 19-acre site for the KSU Gardens is on display in the Quinlan Visitor Center. Visitors to the Gardens can view these plans designed by instructors, students, and alumni of the KSU Landscape Architecture Department.

Annual Friends Memberships help support construction, maintenance, and educational programs in the Gardens. To become a Friend of the KSU Gardens, please complete the form on the back.

### **Membership Levels:**

**Patron** — (\$1 to \$49)

**Contributor** — (\$50 to \$99)

**Supporter** — (\$100 to \$249)

**Benefactor** — (\$250 to \$499)

**Builders Circle** — (\$500 to \$999)

**Distinguished Friend** — (\$1,000 and up)

**Quinlan Society** — (\$10,000 and above)