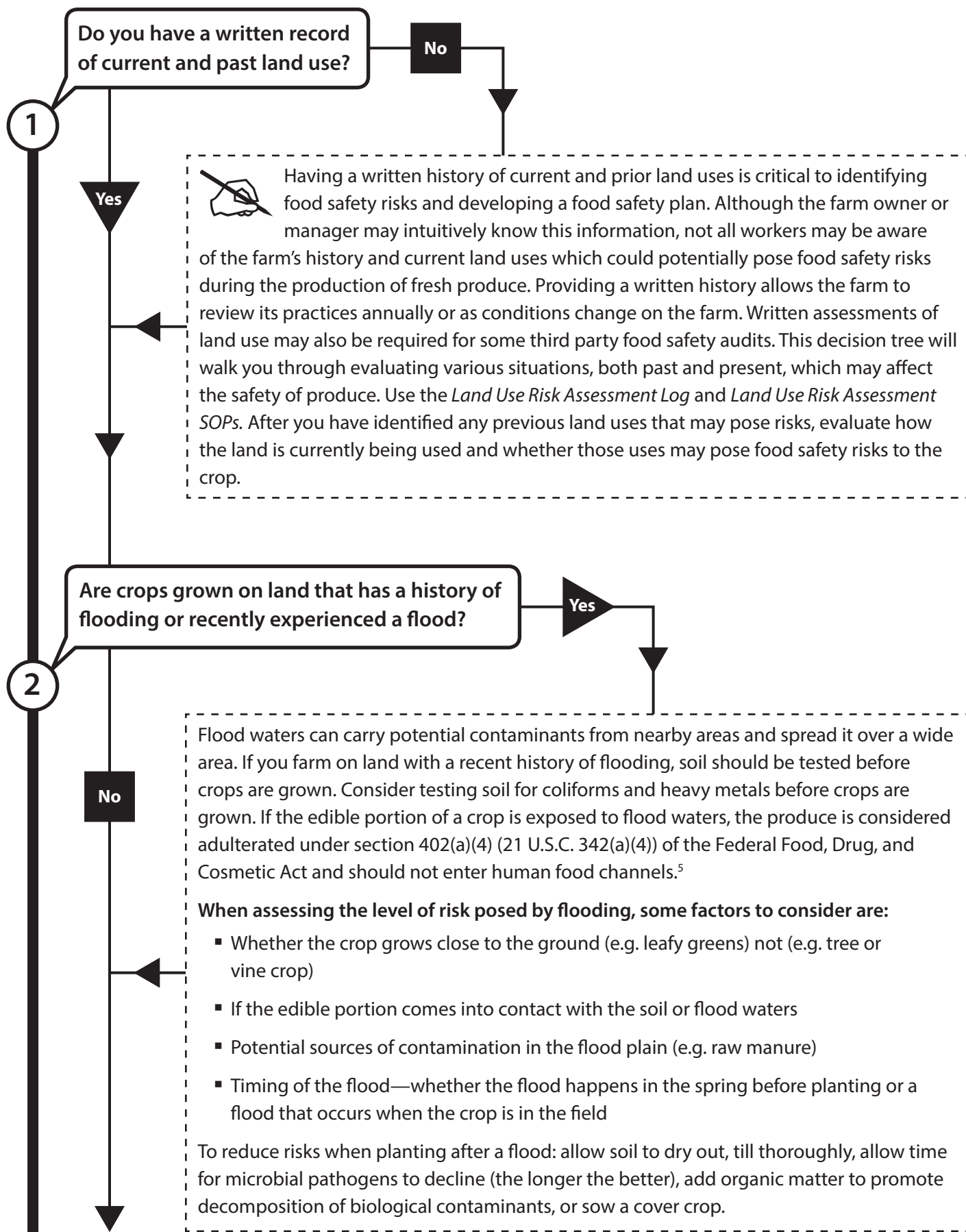
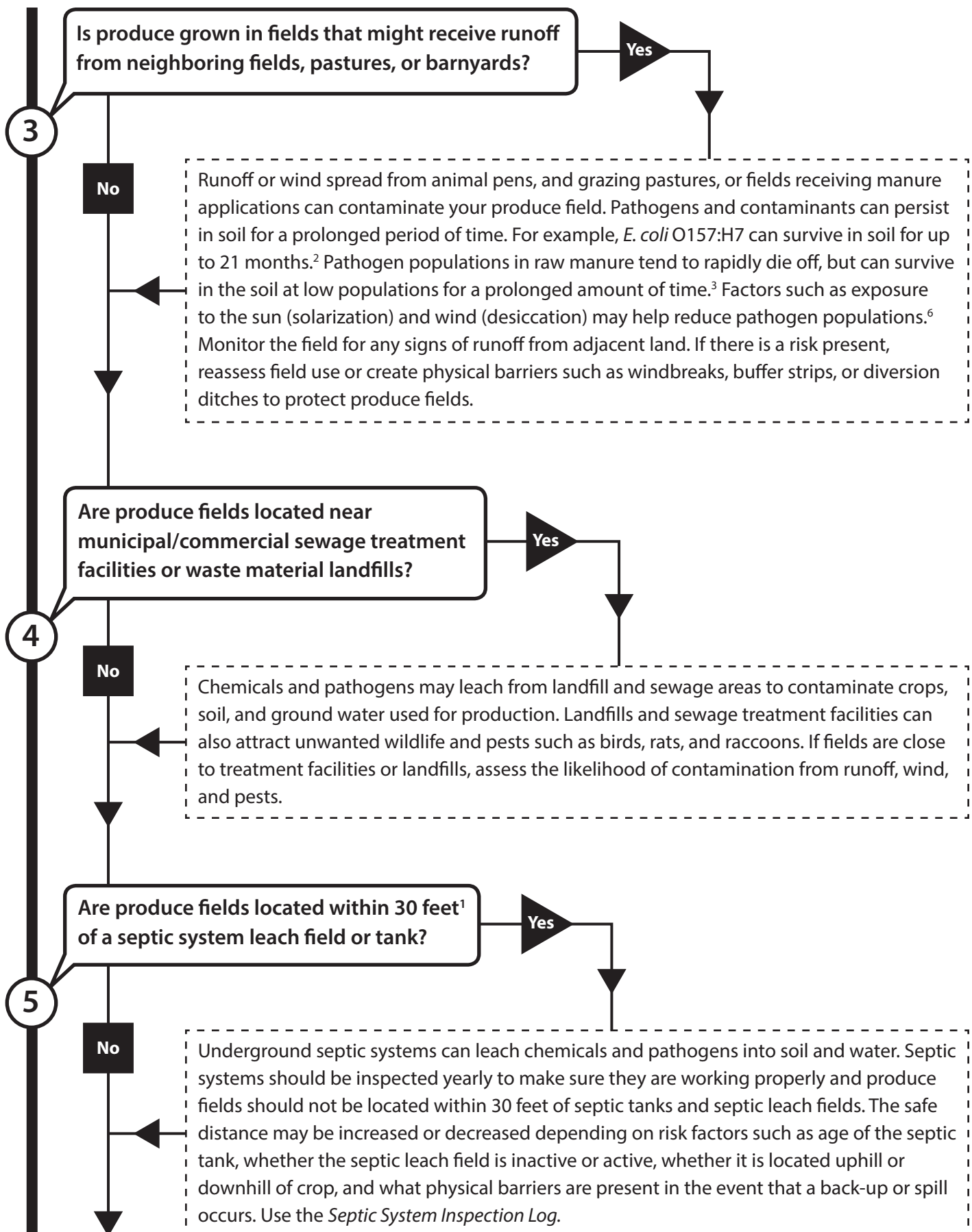


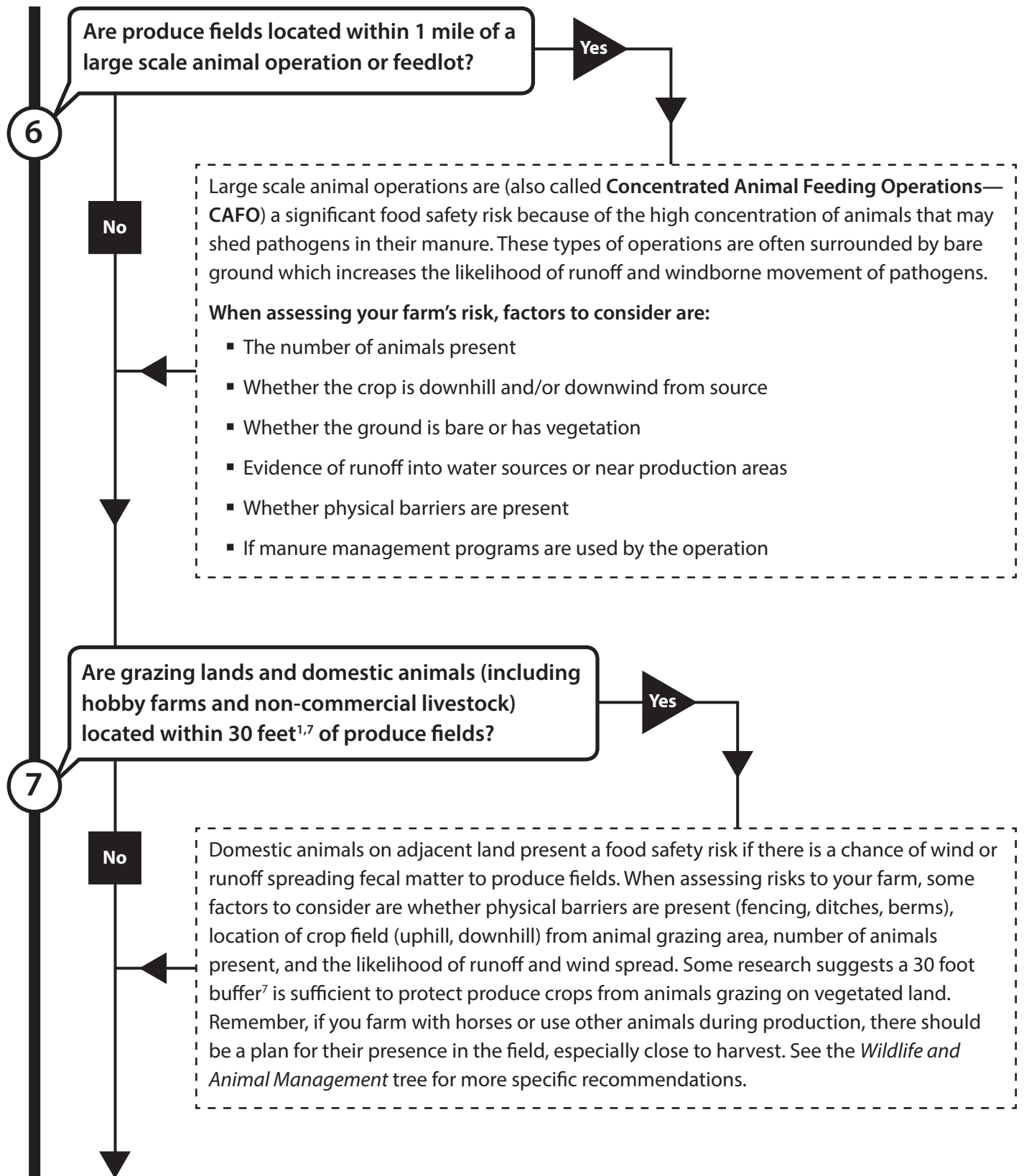
Land Use Decision Tree



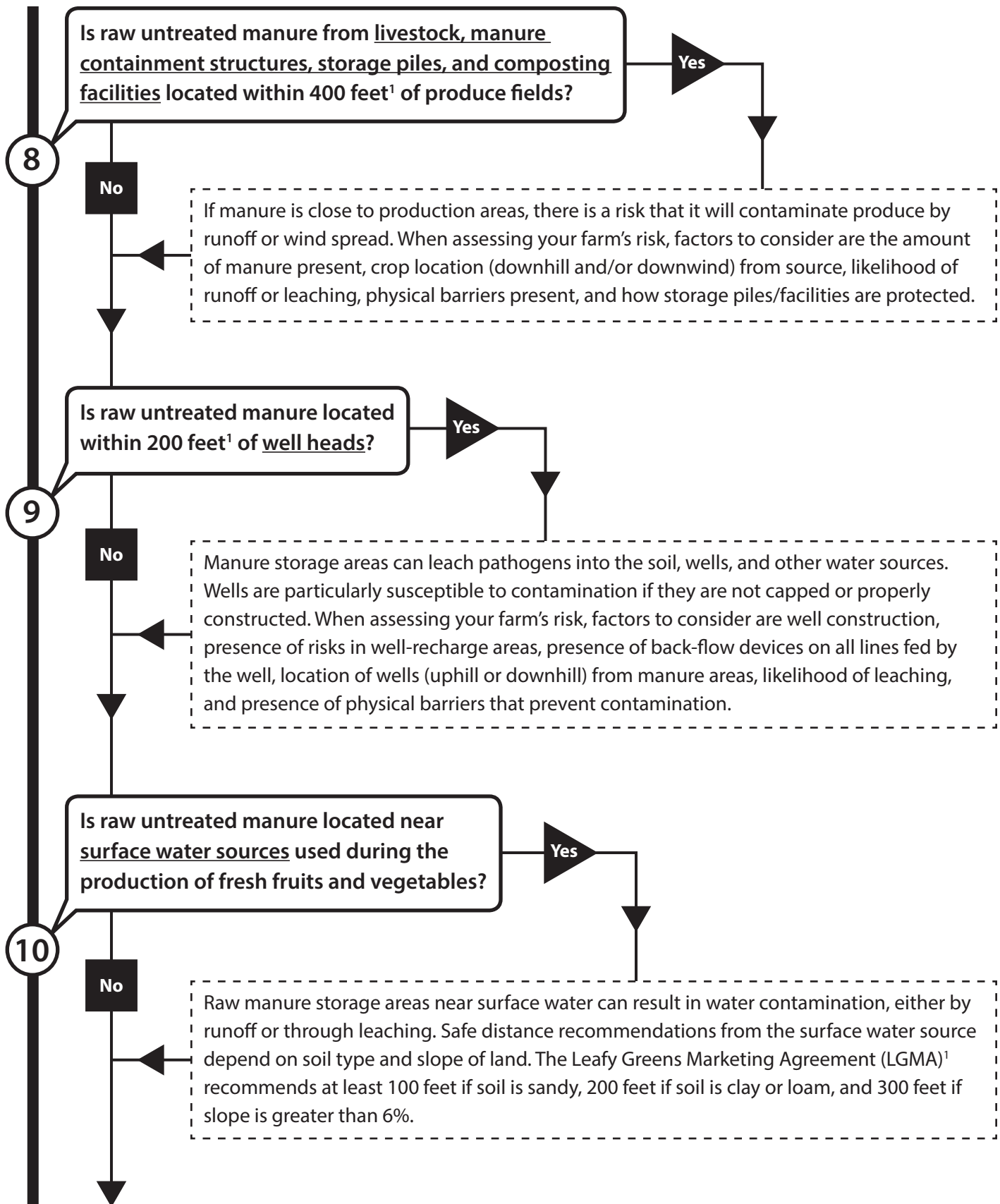
Land Use Decision Tree



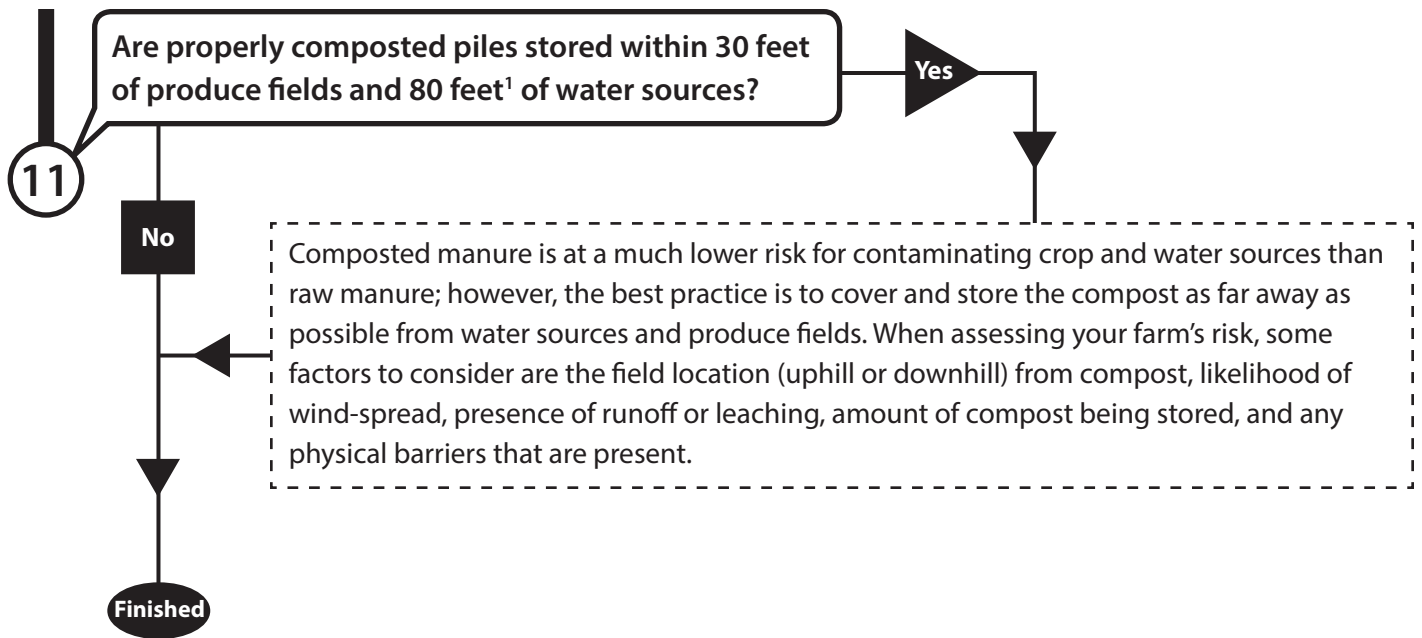
Land Use Decision Tree



Land Use Decision Tree



Land Use Decision Tree



References

1. Western Growers: Leafy Green Guidelines. 2010. Table 6: Crop Land and Water Source, Adjacent Land Use Metrics and Considerations for Risk Analysis. Available at: <http://www.leafygreenguidance.com/node/103>
2. Kudva, I. T., Blanch, K., and Hovde, C. J. "Analysis of *Escherichia coli* O157:H7 Survival in Ovine or Bovine Manure and Manure Slurry." *Applied and Environmental Microbiology* 64, no. 9 (1998): 3166-3174.
3. Islam, M., Morgan, J., Doyle, M. P. et al. "Persistence of *Salmonella enterica* Serovar Typhimurium on Lettuce and Parsley and in Soils on Which They were Grown in Fields Treated with Contaminated Manure Composts or Irrigation Water." *Foodborne Pathogens and Disease* 1, no. 1 (2004): 27-35.
4. EPA. Consolidated Concentrated Animal Feeding Operations. http://www.epa.gov/npdes/regulations/cafo_final_rule2008_comp.pdf
5. FDA Guidance for Industry: Evaluating the Safety of Flood-affected Food Crops for Human Consumption. <http://www.fda.gov/Food/GuidanceRegulation/GuidanceDocumentsRegulatoryInformation/EmergencyResponse/ucm287808.htm>
6. Berry, E., Wells, J. 2012. "Soil solarization reduces *Escherichia coli* O157:H7 and total *Escherichia coli* on cattle feedlot pen surfaces." *Journal of Food Protection*, 75(1):7-13.
7. Hoar, B., Atwill, E., Carlton, L., Celis, J., Carabez, J., Nguyen, T. 2013. Buffers between grazing sheep and leafy crops augment food safety. *California Agriculture* 67(2):104-109.