

Animal EXCLUSION

UTIA INSTITUTE OF AGRICULTURE
THE UNIVERSITY OF TENNESSEE

DISTANCE YOUR PLOTS FROM ALL LIVESTOCK.

KEEP YOUR PLOTS NEAT!
PLANT DEBRIS FROM THE FIELD CAN ATTRACT A LOT OF INSECTS AND ANIMALS.

SCOUT FOR SIGNS OF WILDLIFE IN THE FIELD AND TRY TO DETER THEIR PRESENCE BY FENCING, NOISE CANNONS, OR DECOYS.

STANDING WATER WILL DRAW INSECTS AND WILDLIFE AND SHOULD BE AVOIDED.

SCOUT FOR FECES, REMOVE IT FROM THE FIELD AND CREATE AT LEAST A 5FT NO HARVEST BUFFER AROUND IT.

AS MUCH AS YOU LOVE YOUR TRUSTED COMPANION, JUST LIKE WILDLIFE THEY SHOULDN'T BE IN THE FIELD

ALL THROUGHOUT THE GROWING SEASON MONITOR ANIMAL ACTIVITY ON YOUR PLOT AND KEEP RECORDS WITH YOUR OBSERVATIONS AND ANY ACTIONS.



IRRIGATION WATER

UTIA INSTITUTE OF AGRICULTURE
THE UNIVERSITY OF TENNESSEE

The City

IF USING MUNICIPAL OR RURAL WATER, GET A WATER QUALITY REPORT FROM THE SUPPLIER EACH YEAR AND KEEP IT ON FILE.

SURFACE WATER SOURCES, LIKE RIVERS, PONDS AND LAKES, ARE MORE LIKELY TO BECOME CONTAMINATED FROM ANIMALS OR RUNOFF.

ONCE YOU GET YOUR TEST RESULTS FROM THE LAB, MAKE SURE THAT THE GENERIC E. COLI POPULATIONS ARE BELOW THE SET THRESHOLDS. TALK TO YOUR EXTENSION PROFESSIONAL TO GET THE MOST RECENT WATER STANDARDS AND TO DISCUSS IF CORRECTIVE ACTIONS ARE NEEDED.

KEEP ALL RECORDS ON FILE FOR THREE YEARS.

DRIP IRRIGATION IS PREFERRED TO OVERHEAD TO LIMIT WATER CONTACT WITH PRODUCE.

CHECK THE GENERIC E. COLI COUNTS IN 100 ML OF IRRIGATION WATER. THIS SHOULD BE DONE EVERY YEAR IF IT COMES FROM A WELL, BUT SURFACE WATER SHOULD BE CHECKED MORE FREQUENTLY SINCE ITS QUALITY CAN CHANGE QUICKLY.

A PROPERLY INSTALLED AND CAPPED WELL IS PREFERRED OVER SURFACE WATER FOR IRRIGATION.

TEST RESULTS

SAMPLE 1	0.00 CFU/CM2	SAMPLE 8	0.00 CFU/CM2
SAMPLE 2	0.00 CFU/CM2	SAMPLE 9	0.00 CFU/CM2
SAMPLE 3	0.00 CFU/CM2	SAMPLE 10	0.00 CFU/CM2
SAMPLE 4	0.00 CFU/CM2	SAMPLE 11	0.00 CFU/CM2
SAMPLE 5	0.00 CFU/CM2	SAMPLE 12	0.00 CFU/CM2
SAMPLE 6	0.00 CFU/CM2	SAMPLE 13	0.00 CFU/CM2
SAMPLE 7	0.00 CFU/CM2	SAMPLE 14	0.00 CFU/CM2

PACKING SHED

UTIA INSTITUTE OF AGRICULTURE
THE UNIVERSITY OF TENNESSEE

OUTDOOR AREAS SHOULD BE COVERED



LIGHTING SHOULD BE BREAK RESISTANT THIS CAN INCLUDE TEFLON-COATED BULBS OR BULBS WITH PLASTIC SLEEVES

ALL WORK SURFACES, CONTAINERS AND UTENSILS SHOULD BE CLEANED AND SANITIZED AT LEAST ONCE DAILY

USE FOOD GRADE HOSE

ALL WORK SURFACES SHOULD BE MADE OF HARD PLASTIC OR METAL BECAUSE THEY CAN BE CLEANED

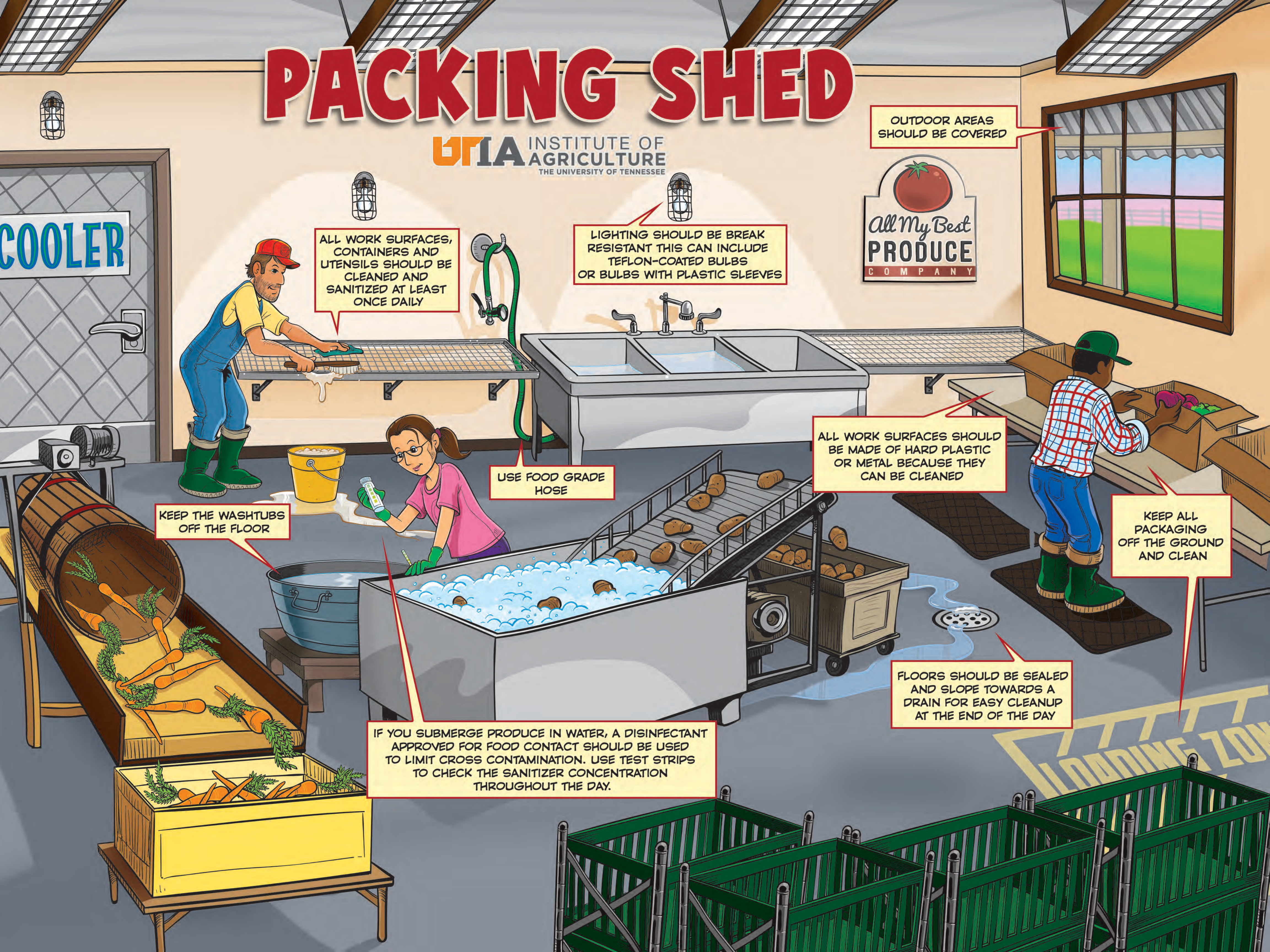
KEEP ALL PACKAGING OFF THE GROUND AND CLEAN

KEEP THE WASHTUBS OFF THE FLOOR

IF YOU SUBMERGE PRODUCE IN WATER, A DISINFECTANT APPROVED FOR FOOD CONTACT SHOULD BE USED TO LIMIT CROSS CONTAMINATION. USE TEST STRIPS TO CHECK THE SANITIZER CONCENTRATION THROUGHOUT THE DAY.

FLOORS SHOULD BE SEALED AND SLOPE TOWARDS A DRAIN FOR EASY CLEANUP AT THE END OF THE DAY

COOLER



TRACEABILITY & TRANSPORT

UTIA INSTITUTE OF AGRICULTURE
THE UNIVERSITY OF TENNESSEE

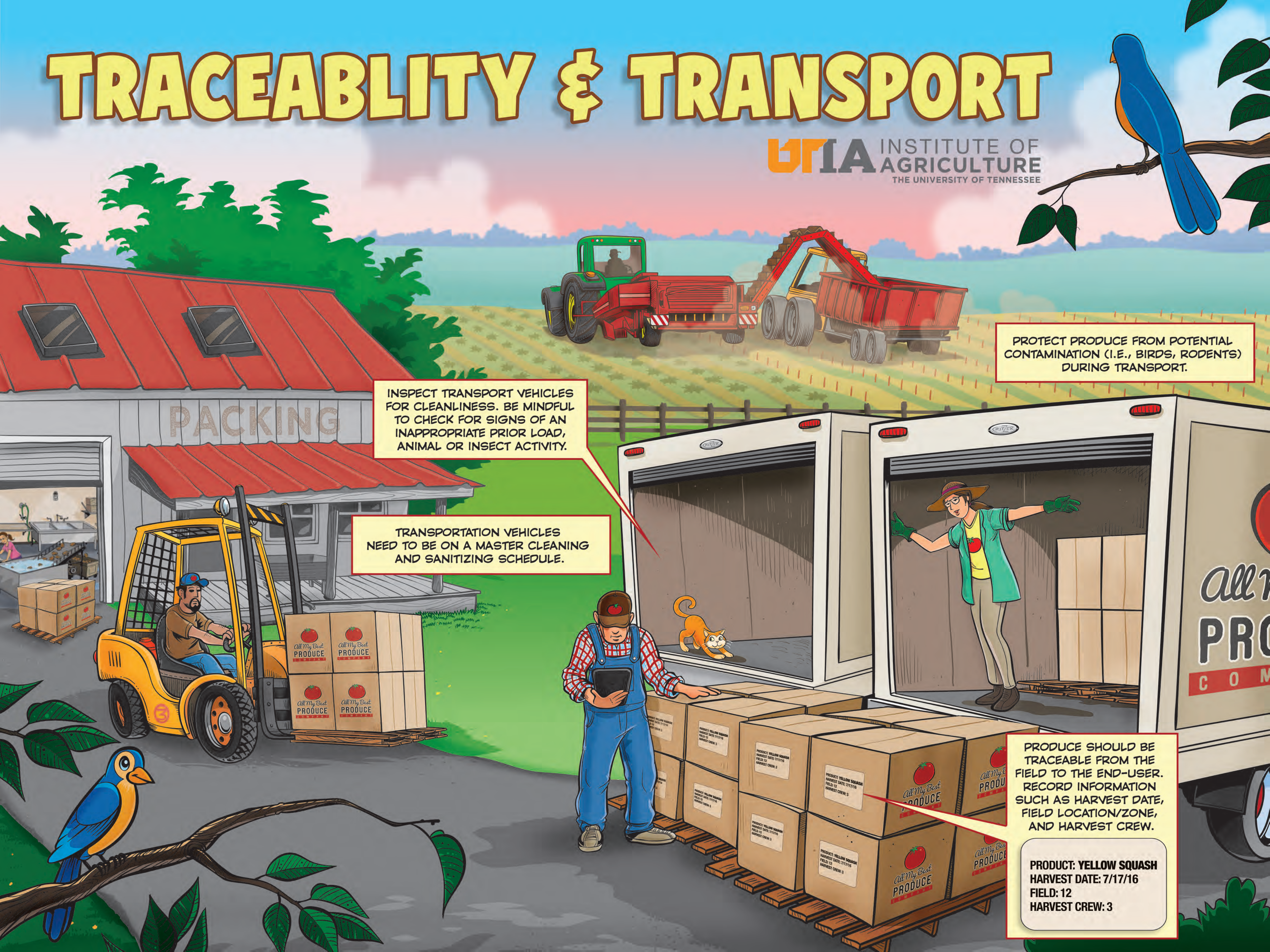
PROTECT PRODUCE FROM POTENTIAL CONTAMINATION (I.E., BIRDS, RODENTS) DURING TRANSPORT.

INSPECT TRANSPORT VEHICLES FOR CLEANLINESS. BE MINDFUL TO CHECK FOR SIGNS OF AN INAPPROPRIATE PRIOR LOAD, ANIMAL OR INSECT ACTIVITY.

TRANSPORTATION VEHICLES NEED TO BE ON A MASTER CLEANING AND SANITIZING SCHEDULE.

PRODUCE SHOULD BE TRACEABLE FROM THE FIELD TO THE END-USER. RECORD INFORMATION SUCH AS HARVEST DATE, FIELD LOCATION/ZONE, AND HARVEST CREW.

PRODUCT: YELLOW SQUASH
HARVEST DATE: 7/17/16
FIELD: 12
HARVEST CREW: 3



Worker HEALTH & HYGIENE

UTIA INSTITUTE OF AGRICULTURE
THE UNIVERSITY OF TENNESSEE

PLEASE
SIGN IN
INGRESAR
POR FAVOR

USE DESIGNATED
BREAK AREAS
FOR EATING, DRINKING
OR SMOKING



ALL SIGNS AND
TRAINING MATERIALS
SHOULD BE IN A
LANGUAGE EMPLOYEES
UNDERSTAND

TRAIN WORKERS
ON ALL POLICIES
AND KEEP RECORDS
ON TRAININGS

HAVE A FIRST-AID KIT
AND TRAIN EVERYONE
ON HOW TO USE IT.

WASH YOUR HANDS
FOR 20 SECONDS
WITH SOAP AND WATER

WEAR CLEAN
CLOTHING
AND
BATHE DAILY

POLICIES
and
PROCEDURES

1. Wash your hands
2. Use hand sanitizer
3. Wear clean clothing



KEEP TOILETS
CLEAN AND STOCKED
AND KEEP RECORDS

HAVE ALL VISITORS
SIGN-IN AND TRAIN
THEM ON FARM
POLICIES

SIGN IN

NAME	PHONE
John Doe	800-123-4567
Jane Smith	901-234-5678
Mike Johnson	720-345-6789
Emily White	404-456-7890

NO WORKING
WHEN YOU ARE
VOMITING, HAVING DIARRHEA,
NAUSEA OR JAUNDICE
(YELLOWING OF SKIN
AND EYES)