

EH&S Deliverables College of Agriculture

Discovery, Prioritization & Mitigation Strategies
Environmental Health & Safety Management System

Presenter:
John H. Gamble

For:
EH&S Committee
Kansas State University

Presentation: June 22, 2016



Ag Environmental Health and Safety

- Home
- Announcements
- People
- Statement of Commitment
- EH&S Committees
- EH&S Services
- Impacts & Hazards
- Objectives & Targets
- Guidance Documents
- Training
- Accidents, Incidents & Near Misses
- Presentations
- Additional Resources
- Customer Service Survey
- Questions or Concerns

KANSAS STATE UNIVERSITY
College of Agriculture
Health, Safety and Environmental Protection

Statement of Commitment

Kansas State University College of Agriculture is committed to maintaining a healthy and safe environment for its students, faculty, staff, visitors, and neighbors. We strive to foster a culture of safety and environmental protection across every part of our facilities. Members of the College of Agriculture community should therefore comply with environmental health and safety laws, regulations, and with current best practices regarding to operations and their settings. In addition, members of the community should commit to continuous improvement in their efforts to minimize adverse environmental impacts and adhere to the principles of a culture of safety in the College's operations for:

- Accepting the critical role each person has in protecting his or her own safety and occupational health, as well as others.
- Recognizing the critical importance of adherence to the highest standards for safety and occupational health for our facilities, staff, and the community around us.
- Minimizing air and water pollution, and waste generation.
- Incorporating safety and environmental protection into all operations, including but not limited to experimental design, facility construction, and equipment specifications.
- Providing students and employees with health, safety and environmental education targeted to maximize safe work practices and to address the potential for injury or illness.
- Creating an environment where individuals are able to recognize and to report errors without fear of reprimand or punishment.
- Providing appropriate and timely information (responsive to questions or concerns about environmental health and safety issues).
- Integrating students, disseminating lessons learned to faculty, staff and student workers, and conducting programs, as appropriate, to incorporate any positive measurements identified.
- Creating an environment of collaboration among all stakeholders, including researchers, environmental health and safety coordinators, students, and staff.
- Identifying health, safety, and environmental issues and resolving them in a time efficient manner.

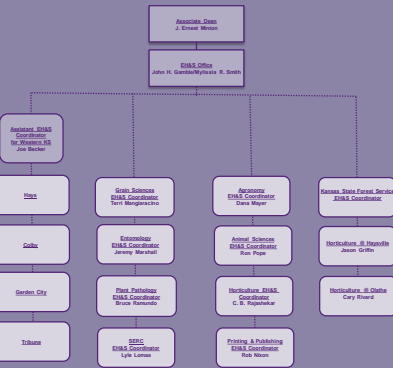
The College's Environmental Health and Safety staff, working closely with oversight committees, has developed programs and standards of practice designed to follow the above path.

Department heads, directors, unit leaders, lab managers and other supervisors are responsible for implementing these standards within their areas of responsibility.

John H. Gamble
Dean, College of Agriculture
Member, EHS Research and Extension
December 1, 2015

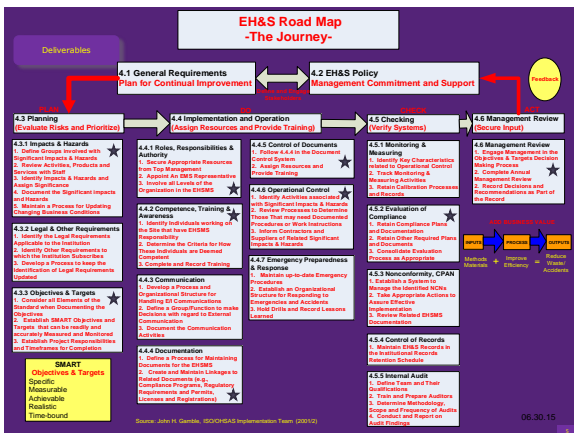


K-State Research & Extension



College of Agriculture
Environmental Health and Safety

EH&S Activities to Products List 2024-2025							
Status		Status		Status		Status	
Management Training	✓	Safety Management	✓	Occupational Health	✓	Environmental	✓
Business Reviews	✓	Labor Safety Inspections	✓	Hazardous Waste Plan	✓	Spill Prevention	✓
Chemical Safety	✓	Deep Safety Inspections	✓	Equipment List	✓	Haz Mat Incidents	✓
EH&S Risk Control	✓	Product Safety Inspections	✓	Inventory Plan	✓	HAZOP Plans	✓
Compliance Documentation	✓	Product Safety Inspections	✓	Inventory Plan	✓	HAZOP Plans	✓
Product Safety Committee	✓	Product Safety Inspections	✓	Inventory Plan	✓	HAZOP Plans	✓
Product Safety Inspections	✓	Product Safety Inspections	✓	Inventory Plan	✓	HAZOP Plans	✓
Product Safety Inspections	✓	Product Safety Inspections	✓	Inventory Plan	✓	HAZOP Plans	✓
Product Safety Inspections	✓	Product Safety Inspections	✓	Inventory Plan	✓	HAZOP Plans	✓
Product Safety Inspections	✓	Product Safety Inspections	✓	Inventory Plan	✓	HAZOP Plans	✓



OSHA's Four-Point Workplace Program

- 1. Management Commitment and Employee Involvement.**
The manager or management team leads the way, by setting policy, assigning and supporting responsibility, setting an example and involving employees.
- 2. Worksite Analysis.**
The worksite is continually analyzed to identify all existing and potential hazards.
- 3. Hazard Prevention and Control.**
Methods to prevent or control existing or potential hazards are put in place and maintained.
- 4. Training for Employees, Supervisors and Managers.**
Managers, supervisors and employees are trained to understand and deal with worksite hazards.

Reporting of Accidents, Incidents and Near Misses



Accidents, Incidents, and Near Misses Standard of Practice

KANSAS STATE UNIVERSITY
APPENDIX A
ACCIDENT/INCIDENT/NEAR MISS INVESTIGATION FORM
 Revision 1.2
 06/11/08

PURPOSE: The reason for investigating an accident, incident or near miss is to determine the causal of the incident, to identify any rules, hazards, systems or procedures that contributed to the incident, and to recommend corrective action to prevent similar incidents.

SCOPE: An accident/incident/near miss investigation should assess the WHAT, WHO, HOW, WHEN, WHERE and WHY questions with regard to an incident, to include near miss.

DESIRED OUTCOME: Action taken to mitigate risk resulting from the reporting of accidents, incidents and near-misses and create a safer working environment for all employees.

Check Accident Near Misses Unsafe Equipment Property Damage

Incident Date: _____ Incident's Type: _____
 Employee's Name: _____ Job Title: _____
 Department: _____ Job Title: _____
 How long have you been employed at KSU? _____ Start Date (1) Last Date (1) Date When (1) Incident Occurred
 Location of accident/incident/near miss (Building, Room No.): _____
 Date of accident/incident/near miss: _____ Date of accident/incident/near miss: _____
 Supervisor's Name: _____ Signature: _____

Incident Date/Correcting Action: _____

Describe location of how the accident, incident, or near miss occurred.

What was the employee doing just prior to the incident/near miss, include any tools or machinery used?

Describe how/why of how the accident, incident, or near miss occurred.



Management Review/Input

Executive EH&S Committee



Working Group



Departmental Safety Committees