

Standards of Practice Objectives & Targets

Document Authority:	EH&S Coordinator	Document Custodian:	EH&S Coordinator
Effective Date:	11/01/2015	Issuing Dept:	EH&S
Next Review Date:	11/01/2018	Control Tier:	II
Document Number:	OT001		

I. PURPOSE

To establish, maintain and track targets at relevant levels within KSU's College of Agriculture (COA) based on the three EHSMS objectives: reduce OH&S risks, prevent pollution and conserve energy.

II. SCOPE

Objectives and targets are the overall goal of the COA's management system and are used as a means to measure and improve its performance. The objectives and targets established by the COA are designed to achieve the intentions of the Executive EH&S Committee. Implementation of well-developed objectives and targets provides a framework of clearly defined and action-oriented goals that result in minimizing the potential liability associated with health, safety and environmental risks and related impacts of the COA's activities, products and services.

Objectives are action- and prevention-oriented. Objectives set the overall direction or end goal of the management system. Targets are assigned to each objective and establish measurable performance criteria used to evaluate whether or not the organization is achieving its objectives. Targets often drive the specific steps or action needed to achieve the objective. Based on the College's specific objectives, targets may be established for different areas, departments or processes within KSU's COA.

III. CONSEQUENCES OF DEVIATION

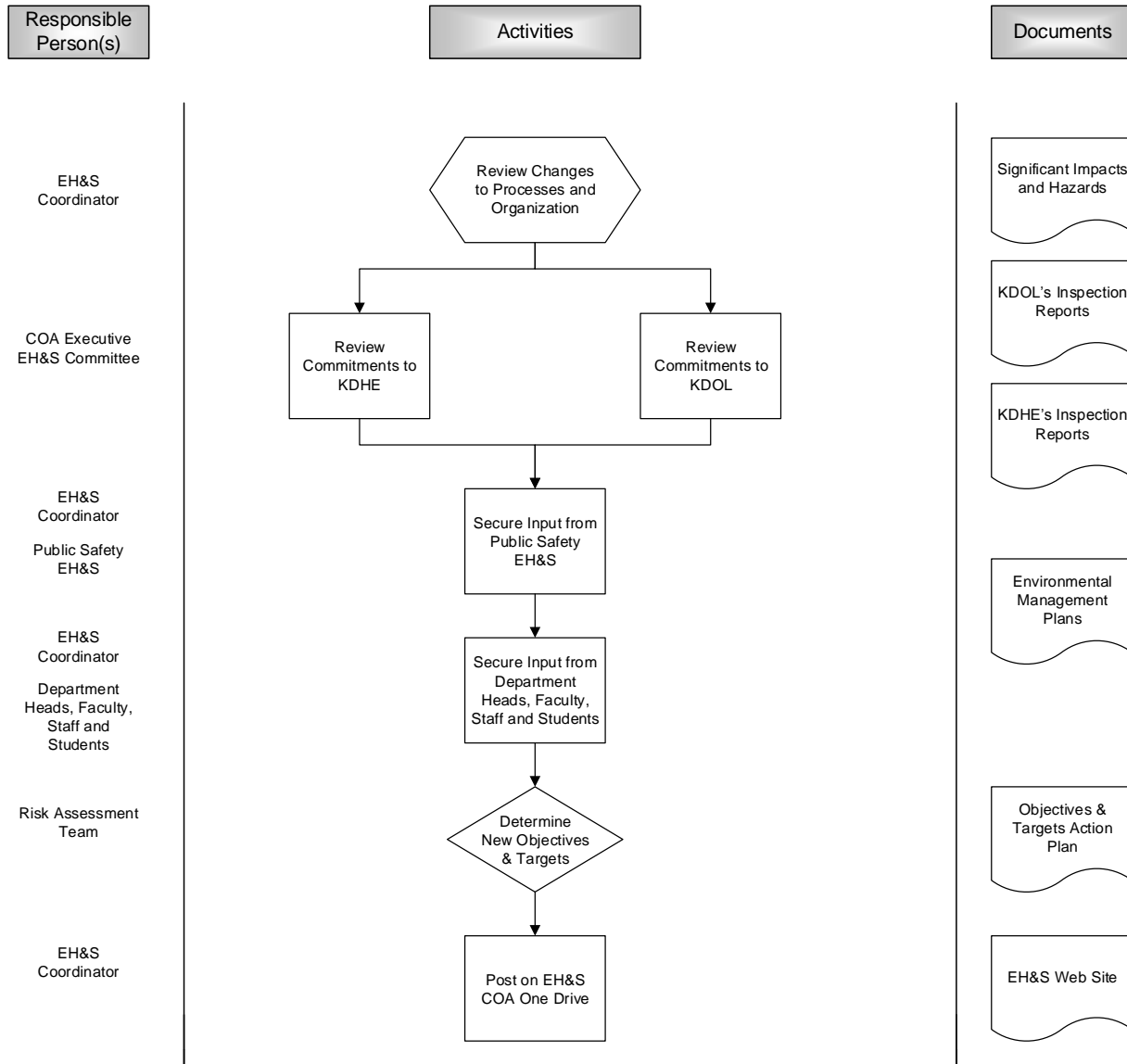
The objectives & targets process provides a means to systematically create deliverables that can be specific, measurable, achievable, realistic and time bounded (SMART goals). Ignoring this element would limit the continual improvement process.

IV. DEFINITIONS

See EHSMS Definitions

V. KEY RESPONSIBILITIES, ACTIVITIES AND DOCUMENTATION

Objectives and Targets Flowchart



RELATED DOCUMENTS & TOOLS

- [Significant Impacts and Hazards Matrix](#)
- [Objectives & Targets Action Plan](#)

Revision Log			
REVISION DATE	REVISION NO.	REVISION AUTHORITY	NATURE OF REVISION
10/13/2015	0	EH&S Coordinator	Date of Original Document Issuance

Controlled documents are maintained electronically.
Printed documents are UNCONTROLLED.
Prior to relying on a printed document, verify that it is current.