

Standards of Practice Impacts & Hazards Discovery Process

Document Authority:	EH&S Coordinator	Document Custodian:	EH&S Coordinator
Effective Date:	11/01/2015	Issuing Dept:	College of Agriculture EH&S
Next Review Date:	11/01/2018	Control Tier:	II
Document Number:	AH001		

I. PURPOSE

To identify and document the environmental impacts and health & safety hazards of KSU's College of Agriculture (COA) activities, products and services in order to determine those that may have a significant impact on the health & safety of faculty, staff, students visitors and the environment.

II. SCOPE

This process covers activities, products and services that KSU COA can control and over which it can be expected to have an influence. Significant impacts and hazards identified during this process will be considered in establishing objectives and targets for the COA.

Potential environmental impacts and health & safety hazards that are not under the College's direct control, but over which the College can reasonably be expected to have an influence, will be evaluated.

Activities, products and services that are identified are intended to be 'large enough for meaningful examination and small enough to be sufficiently understood'.

III. CONSEQUENCES OF DEVIATION

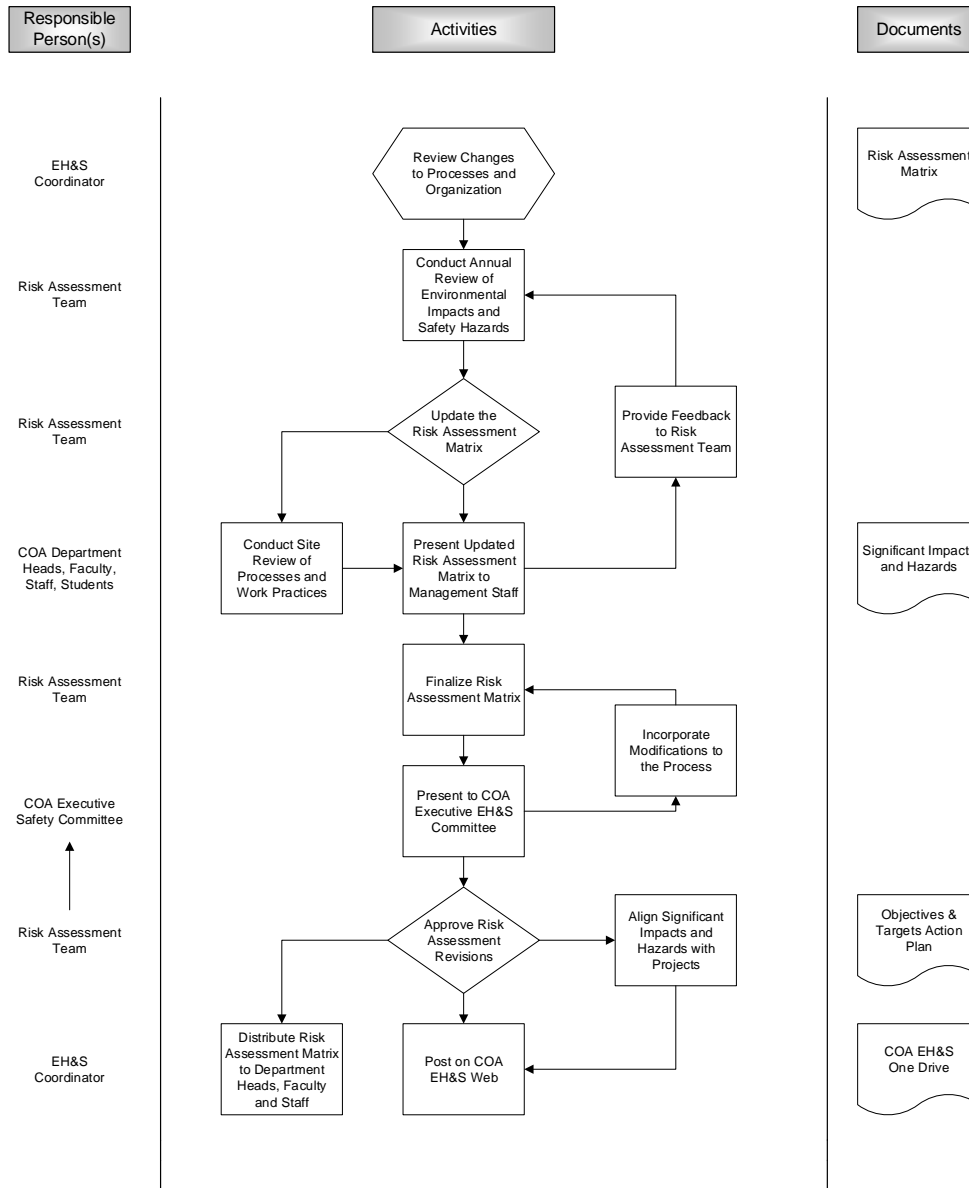
The environmental impacts and health & safety hazards discovery process serves as the foundation for the EHSMS. Ignoring this element of the standard would severely diminish the value of the EHSMS.

IV. DEFINITIONS

See Risk Assessment Definitions

V. KEY RESPONSIBILITIES, ACTIVITIES AND DOCUMENTATION

Impacts and Hazards Discovery Process Flowchart



VI. RELATED DOCUMENTS & TOOLS

- [Risk Assessment Matrix](#)
- [Significant Impacts and Hazards](#)
- [Risk Assessment Definitions](#)

Revision Log			
REVISION DATE	REVISION NO.	REVISION AUTHORITY	NATURE OF REVISION
10/13/2015	0	EH&S Coordinator	Date of Original Document Issuance

Controlled documents are maintained electronically.
Printed documents are UNCONTROLLED.
Prior to relying on a printed document, verify that it is current.